

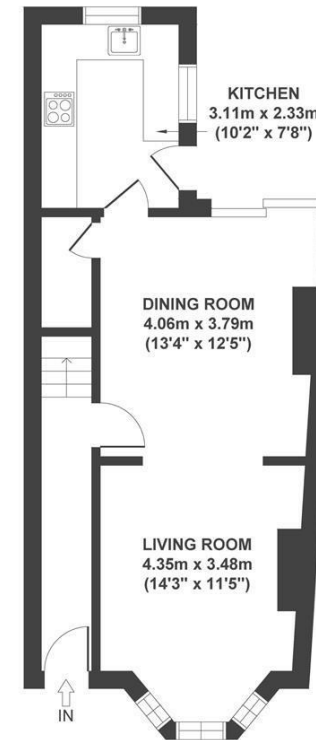
Boardwalk

Elmdale Road

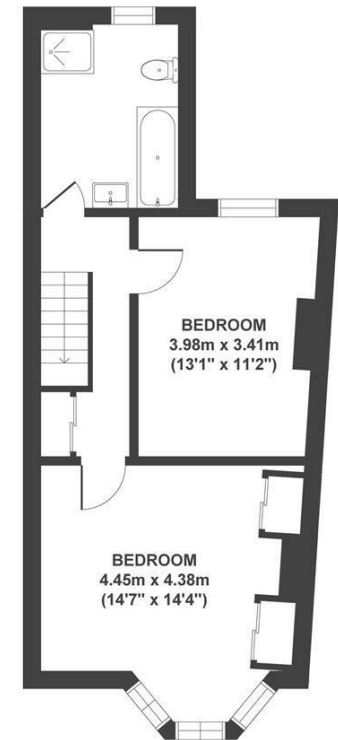
BEDMINSTER, BRISTOL

Elmdale Road BEDMINSTER

APPROXIMATE FLOOR AREA
86 SQM / 926 SQFT



GROUND FLOOR



FIRST FLOOR



Boardwalk

Elmdale Road

BEDMINSTER, BRISTOL



£460,000



2 Bedrooms



BS3 3JE



1 Bathrooms

"We love our house! it's our first home, where we moved back from London to move into - and it's genuinely hard to leave but the time is right. We've loved the space it gives us - but with it, a cosy feeling too. The fire on a cold winter day is just the best thing ever, and the garden is so lovely and sunny in summer for most of the day too. We love the short walk to North Street, great pubs and Ashton Gate (we're Bears fans!) and our neighbours are both so lovely too."

